

“USEFUL, WITH A PLEASANT  
DEGREE OF HUMOR”

THE  
ORIGINAL  
WINDMILL  
CEILING FANS,  
**2024**  
ALMANAC

[WindmillCeilingFans.com](http://WindmillCeilingFans.com)



THE ORIGINAL  
**WINDMILL**  
CEILING FANS

ALSO FEATURING HOLIDAYS, 2024 CALENDAR,  
ALMANAC ODDITIES, ETC...

## From the Heart of Our Windmill Ceiling Fans FAN-ILY

Howdy, y'all! It's Kelly Eggers, the proud owner of Windmill Ceiling Fans, and I wanted to take a moment to express my wholehearted gratitude to each and every one of our cherished FAN-ILY members and clients!

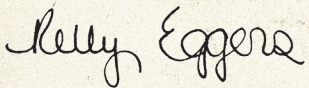
It fills my heart with joy to see the love, admiration, and appreciation you all share for the hardworking Western lifestyle. We pour our hearts and souls into handcrafting these custom Windmill Ceiling Fans, drawing inspiration from the rustic nature of those old 18-blade windmills in the pasture. And it's your unwavering support that keeps our windmills turning!

Each fan is handcrafted with a passion that stems from a deep connection to the Western lifestyle and an admiration for the enduring spirit of the land. As we invite you into our FAN-ILY, thank you for believing in our vision and making it a reality! We're excited for the journey ahead and all the unique windmill fans we'll create together.

Thank you for being a part of our journey, for sharing your stories, and for letting us be a part of yours. It is our honor to be a part of your homes, ranches, and spaces where memories are made and dreams are woven. With every Windmill Ceiling Fan we create, we aim to bring the spirit of the Old West to life, fanning the flames of nostalgia and authenticity.

We are excited to continue this journey with you and are more committed than ever to delivering not just extraordinary fans but the embodiment of a lifestyle that celebrates hard work, tradition, and the boundless beauty of the American West in your home through our Windmill Ceiling Fans, Ranch & Co. Interiors and Western Cowhide Frameworks.

With gratitude,



Kelly Eggers  
and the Windmill Ceiling Fans Team



## History of American-Style Windmills

In 1854, Daniel Halladay developed the American-type windmill. It was smaller, less expensive and could be shipped and built easily. Its sails were held into the wind by a weight, which would rise slowing to reduce the area of the sails when the wind was too fast. Traditional cloth covered sails were soon replaced with smaller wooden blades.



These new windmills were ideal for settlers on the plains. They could pump water from great depths at a steady rate. They could shift into the prevailing winds and functioned well in fast and slow winds. And to top it off, they required little maintenance compared to European windmills.

Self-governing water pump windmills soon became a staple on the plains.

Homesteaders, farmers, and ranchers were no longer dependent on natural water as they could drill wells and pump water. Windmills were often among a homesteader's most prized possessions. The water pumped by windmills was used to cook, bathe, drink, water crops and animals, wash clothes, and more. These mills were simple, well-constructed, and dependable.

Railroads were another important customer. Steam locomotives had to be watered at regular intervals. On the first transcontinental railroad, windmills were placed about every twenty miles to pump water for the trains.

Knowing windmills could be counted on for water helped speed up western migration. Ranchers could build up herds, farmers planted more, and railroads could pump water into tanks along their routes. The availability of water allowed the Great Plains to become the nation's breadbasket.

## History of The Original Windmill Ceiling Fans Co.

Once we moved onto our farm and bardoimium in Texas, filled with treasures from my family farm, I soon discovered we had a problem. Our living space was on the second floor. There were horses living below us, and we had 16-foot vaulted ceilings. It was hot and near impossible to cool the hot air trapped in the vault. At floor level the temperature was 70 degrees. In the vaulted ceiling, however, it was over 100 degrees.

We added more air conditioning, and that improved things a bit, but everyone told me that what I really needed was ceiling fans. I searched and searched for the right one, but I didn't like any of the ones I found. One day, looking out across one of our pastures, I spotted our old farm-style windmill and realized, that was the answer. However, I soon found out how much it weighed. I also realized that I had no means of getting a large motor on my ceiling and adding the necessary supports without ripping out a huge chunk of my beautiful ceiling. That was definitely not going to happen!

After **lots of research and design**, I finally found my perfect solution: a windmill ceiling fan made of aluminum. It was large and extremely efficient, but also lightweight enough that it could easily be attached to any ceiling. **The Windmill Ceiling Fan Company was born.**

Our windmill fans are unique and handcrafted right here on our property in the heart of North Texas. Each fan is constructed of durable, steel, and lightweight aluminum making existing supports and electrical service perfect for simple installation.

We are the only Windmill Ceiling Fan Company that provides the unique aluminum lightweight design and custom finishes. Perfect for interior or exterior placements. Homes, businesses, restaurants, and event spaces. Whether you are looking for a rustic windmill ceiling fan, farmhouse, modern or contemporary we have the design for you.



## American Made and Handcrafted

*We are the only Windmill Ceiling Fan Company that provides the unique aluminum lightweight design and custom finishes.*

*Our fans are not mass-produced. Each of our windmill ceiling fans are hand-crafted, they might have slight variances and the rings may not be perfectly round or flat, very similar to an actual windmill in a pasture.*



We grew up in small communities working our family farms in Iowa and Kansas. The values and lessons we learned from the hard-working farming lifestyle and our strong, solid families drives us today. We take pride in our Windmill Ceiling Fans and the superior service we provide. Both our grandfathers often said "a person is only as good as his word". You have our word – you will love your fan from The Original Windmill Ceiling Fan Company. We'll be happy to help you with questions and special requests to make sure your Windmill Ceiling Fan purchase is one of the best you've ever made.

## WHY Should Your Next Ceiling Fan Be Made of Aluminum?

Imagine sitting in two rooms side by side. One room has a 50-pound heavy-steel ceiling fan turning round and round, and the other has a windmill ceiling fan made of lightweight aluminum. Which metal apparatus would you rather have spinning above your head?

Many people might say the steel fan. Sure, it's a bear to install. But it evokes feelings of strength and durability.

Plus, it can also push a lot of air, right?

After all, comfort and style are the names of the game.

While these things are true, it's important not to sleep on the benefits of aluminum. Most fans on the market today are made of wood, plastic, Steel, or medium-density fiberboard or particleboard.

But at The Original Windmill Ceiling Fan Company, we would never use anything other than aluminum.

From our nine years of custom-creating Windmill Ceiling Fans, we would go as far to say that you shouldn't get a ceiling fan made of any other material!

### Here are 5 BIG reasons why!

**1. Starting with Steel** — while it seems like a unique design, steel blades would be WAY too heavy! Most steel ceiling fans weigh around 250 pounds with maybe 3-5 blades. This will get you some airflow, but not a lot and not consistently. In contrast, windmill ceiling fans have 18 blades; collectively, this fan pushes a lot of air and remains incredibly lightweight. That's because aluminum is one of the lightest metals in the world. Hence, blades will cut through the air with little resistance. Also, aluminum makes installation with existing supports and electrical service extremely easy. There's no need for extra bracing or support.

**2. Durability** — Putting Steel aside for a second, wood and other materials commonly used in ceiling fans can warp, fade, sag, suffer from chips and cracks, and become water-logged over time and exposure to the elements. This is especially true if your fan is made of these materials and is outdoors. On the other hand,



aluminum is strong and corrosion-resistant, which means it stands up to the harshest of conditions and lasts forever! Just another reason we have chosen aluminum as our windmill ceiling fan blades.

**3. Indoor and Outdoor Capability** — With aluminum, you don't have to worry about whether or not the fan you're creating with us will work indoors, outdoors, or both. You can install it inside your home, businesses, restaurants, covered patios, and more because our windmill ceiling fans are damp-rated for indoor and outdoor use! The possibilities are endless for use.

**4. The Perfect Angle** — Aluminum is easier to work with and more pliable than most other materials. Aluminum's malleability allowed it to work at an angle that will push heavy airflow through a room effortlessly.

**5. Custom Designed Finish** — Aluminum finishes are easy on the eyes and create a unique look that makes any room in your house the envy of the neighborhood. The first Windmill Ceiling fan finish was the classic galvanized silver, also known as the raw aluminum look – and people request that heavily to this day! But what if you're looking for a fan that LOOKS like wood but is made of aluminum? We can do that and MORE! We are the only company that provides unique custom finishes for our windmill ceiling fans, designed with your style and hand-crafted by our skilled artisans.

## 2024 HOLIDAYS AND OBSERVANCES

FEDERAL HOLIDAYS ARE LISTED IN BOLD.

- JAN. 1:** New Year's Day  
**JAN. 7:** Orthodox Christmas (Julian)  
**JAN. 15:** Martin Luther King Jr.'s Birthday  
**FEB. 1:** First day of Black History Month  
**FEB. 2:** Groundhog Day  
**FEB. 12:** Abraham Lincoln's Birthday  
**FEB. 13:** Mardi Gras (*Baldwin & Mobile counties, Ala.; La.*)  
**FEB. 14:** Valentine's Day  
**FEB. 15:** Susan B. Anthony's Birthday (*Fla.*)  
**FEB. 19:** Presidents' Day  
**FEB. 22:** George Washington's Birthday  
**FEB. 29:** Leap Day  
**MAR. 2:** Texas Independence Day  
**MAR. 5:** Town Meeting Day (*Vt.*)  
**MAR. 8:** International Women's Day  
**MAR. 10:** Daylight Saving Time begins  
**MAR. 17:** St. Patrick's Day  
Evacuation Day (*Suffolk Co., Mass.*)  
**MAR. 25:** Seward's Day (*Alaska*)  
**MAR. 31:** César Chávez Day  
**APR. 2:** Pascua Florida Day  
**APR. 15:** Patriots Day (*Maine, Mass.*)  
**APR. 21:** San Jacinto Day (*Tex.*)  
**APR. 22:** Earth Day  
**APR. 26:** National Arbor Day  
**MAY 1:** First day of Asian American, Native Hawaiian, and Pacific Islander Heritage Month  
**MAY 5:** Cinco de Mayo  
Holocaust Remembrance Day begins at sundown  
**MAY 8:** Truman Day (*Mo.*)  
**MAY 12:** Mother's Day  
**MAY 18:** Armed Forces Day  
**MAY 20:** Victoria Day (*Canada*)  
**MAY 22:** National Maritime Day  
**MAY 27:** Memorial Day, observed  
**JUNE 1:** First day of Pride Month  
**JUNE 5:** World Environment Day  
**JUNE 6:** D-Day  
**JUNE 11:** King Kamehameha I Day (*Hawaii*)  
**JUNE 14:** Flag Day  
**JUNE 16:** Father's Day  
**JUNE 17:** Bunker Hill Day (*Suffolk Co., Mass.*)  
**JUNE 19:** Juneteenth National Independence Day  
**JUNE 20:** West Virginia Day  
**JULY 1:** Canada Day  
**JULY 4:** Independence Day  
**JULY 20:** Moon Day  
**JULY 24:** Pioneer Day (*Utah*)  
**JULY 27:** National Day of the Cowboy  
**AUG. 1:** Colorado Day  
**AUG. 5:** Civic Holiday (*parts of Canada*)  
**AUG. 16:** Bennington Battle Day (*Vt.*)  
**AUG. 19:** National Aviation Day  
**AUG. 26:** Women's Equality Day  
**SEPT. 2:** Labor Day  
**SEPT. 8:** Grandparents Day  
**SEPT. 9:** Admission Day (*Calif.*)  
**SEPT. 11:** Patriot Day  
**SEPT. 15:** First day of National Hispanic/Latinx Heritage Month  
**SEPT. 17:** Constitution Day  
**SEPT. 21:** International Day of Peace  
**SEPT. 30:** National Day for Truth and Reconciliation (*Canada*)  
**OCT. 7:** Child Health Day  
**OCT. 9:** Leif Eriksson Day  
**OCT. 12:** National Farmer's Day  
**OCT. 14:** Columbus Day, observed  
Indigenous Peoples' Day (*parts of U.S.*)  
Thanksgiving Day (*Canada*)  
**OCT. 18:** Alaska Day  
**OCT. 24:** United Nations Day  
**OCT. 25:** Nevada Day  
**OCT. 31:** Halloween  
**NOV. 3:** Daylight Saving Time ends

Adapted from *The Old Farmer's 2024 Almanac*, by Robert B. Thomas. Copyright ©2023 by Yankee Publishing Inc.

## Indoor/Outdoor Damp Rated

All ceiling fans are subject to a rating system to help buyers determine which is the best one for each location.

Indoor, dry-rated fans are meant for indoor use only, such as in a bedroom, living room, foyer, or dining room. They will not function properly if exposed to water or moisture.

Outdoor fans, on the other hand, are either damp-rated or wet-rated. Damp-rated ceiling fans can be mounted in areas with no direct exposure to water, rain, or snow but can handle their fair share of moisture in damp areas and keep the air circulating in that area for years to come.

Using the correct type of fan for your space is essential since an indoor fan installed outside won't last long.

At The Original Windmill Ceiling Fan Company, all our fans are damp-rated, meaning they can withstand indirect moisture, humidity, and poor ventilation. We take pride in bringing authentic, historically-designed windmill ceiling fans to houses, barndominiums, and outdoor living spaces across America at a fair price. We also offer custom fans that match your personality and style.



Partner with The Original Windmill Ceiling Fan Company and transform your home with a unique and long-lasting work of custom art. Our Windmill Ceiling Fans are designed to resemble old farm-style windmills and boast an impressive diameter and strong blades for optimal performance.

## Various Sizes

### 46", 52", 60", 66" and 72" Windmill Ceiling Fans

(includes 9" down rod)

14-18 blades - .045 aluminum, tubing 3/4" square, 1/8" wall

14 gauge aluminum spoke hub

6 spokes are solid 3/8" aluminum

Fans weigh between 40 and 50 lbs depending on the size and finish

### 84" Windmill Ceiling Fan

18 blades - .063 aluminum, tubing 3/4" square, 3/16" wall

8 spokes are solid 7/16" aluminum

Fans weigh between 50 and 65 lbs depending on the size and finish

### 96" Windmill Ceiling Fan

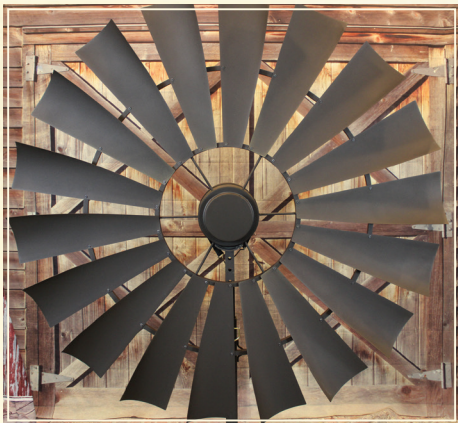
18 blades - .063 aluminum, tubing 3/4" square, 3/16" wall

8 spokes are solid 7/16" aluminum

Fans weigh between 50 and 65 lbs depending on the size and finish

We also have many sizes in between:

"Smallest = 46"



"Largest = 96"

## Right Now, We've Got a Dynamic Duo of Motor Choices!

### The Patriot

- Can be used on the 46", 52", 60", 66", 72" sizes
- The motor housing dimensions - Diameter is 10" / Depth is 6.5" with no uplight and 8" with uplight.
- Variable speed 35 - 60 RPM
- Industrial ball ceiling mount with 3"H x 6.5"D valance included.
- Quiet, gearless motor
- .5 AMPS
- CFM range up to 4500
- High-efficiency electricity rating. Indoor/outdoor use. Damp-rated. Can be used on a flat or sloped ceiling (up to 45 degrees)
- Reversible can be switched on the wall controller and remote
- American Made

### The American

- Can be used on any size fan but required for the 84" and 96" fan
- The motor housing dimensions from top to bottom 13"
- RPM range of 10 to 60
- Geared motor, slight gear noise
- Includes wall mount control box/converter with variable speed and 115 Volt AC input converts to DC current and uses normal electrical wire to fan. (Wall-mount control box MUST be used with this fan. dimensions: 7" height X 5" depth X 3" width).
- Heavy-duty 18" mounting bracket for the high torque DC motor. (18" x 1 3/4" x 2 1/8" dimensions)
- 1.3 AMPS
- CFM range 3500 - 7000
- 1/12 hp but more importantly it has 78 lbs of torque
- High-efficiency electricity rating. Indoor/outdoor use. Damp-rated. Can be used on a flat or sloped ceiling (up to 85 degrees)
- American Made

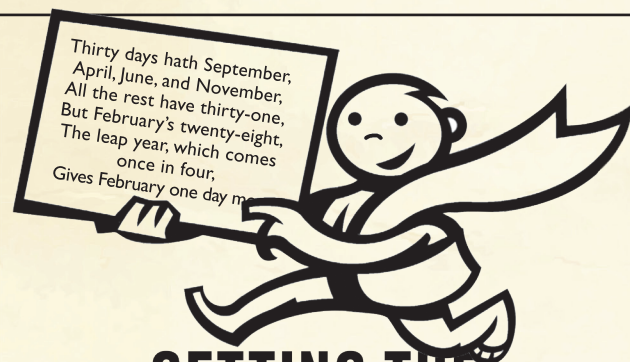


SCAN ME

## 2024 HOLIDAYS AND OBSERVANCES CONTINUED

**NOV. 4:** Will Rogers Day (*Okla.*)  
**NOV. 5:** Election Day  
**NOV. 11:** Veterans Day  
Remembrance Day (*Canada*)  
**NOV. 19:** Discovery of Puerto Rico Day  
**NOV. 28:** Thanksgiving Day  
**NOV. 29:** Acadian Day (*La.*)

**DEC. 7:** National Pearl Harbor  
Remembrance Day  
**DEC. 15:** Bill of Rights Day  
**DEC. 17:** Wright Brothers Day  
**DEC. 25:** Christmas Day  
**DEC. 26:** Boxing Day (*Canada*)  
First day of Kwanzaa



# GETTING THE JUMP ON LEAP DAY

BY TIM GOODWIN  
ILLUSTRATIONS BY TIM ROBINSON

## 2024 IS A LEAP YEAR!

It is widely assumed that leap year—or, more specifically, Leap Day—appears on the calendar every 4 years and that an extra day is added to February in any year that is divisible by four.

Not exactly true. Leap years are defined by two general rules:

■ A year may be a leap year if it is evenly divisible by four,

as is this year.

■ However, century years (those that are divisible by 100, such as 1900 or 2000) can not be leap years unless they are also divisible by 400. So, the years 1700, 1800, and 1900 were not leap years, while the year 2000 was.

The next year that is evenly divisible by four that will not have a Leap Day is the year 2100.

## What They Are Saying...

"Words cannot express how magnificent our ceiling fan is -- it's installed and we are very jazzed. Simply gorgeous and fits perfectly into our home. Thank you for taking time to personally engage us via the card. We are impressed with every aspect of your business. The shipping and packing you have in place for your company is outstanding. Well done!! Once we install the final piece to our ceiling we will be sure to send you pictures. Thank you; thank you again!! We are impressed with you and your folks. Please share our appreciation with everyone that created our piece."

- Tina and Julian C.

"Our fan arrived to British Columbia today, to say its absolutely beautiful would be an understatement! Your company has blown us away, from the first conversation with you guys to the delivery of the fan, this has been a flawless transaction. You guys are amazing! We can't thank you enough, this fan will be treasured in our new house."

- Don and Jen P.

"Bragged to everyone how amazing y'all made the blades look weathered. It really does look incredible."

- Bill L.

"They did it again! Thank you to [www.windmillceilingfans.com](http://www.windmillceilingfans.com) for bringing our design to life with our amazing custom oil rubbed bronze & copper 72" beauty for our IdaHome! Family Owned & Operated, Made in the USA... We're Huge Fans!"

- Kelly V.

"We LOVE our fan!! Every part of our experience interacting with this company has been wonderful! Now I need to find places for more of them!! :) Thanks Again! I highly recommend!"

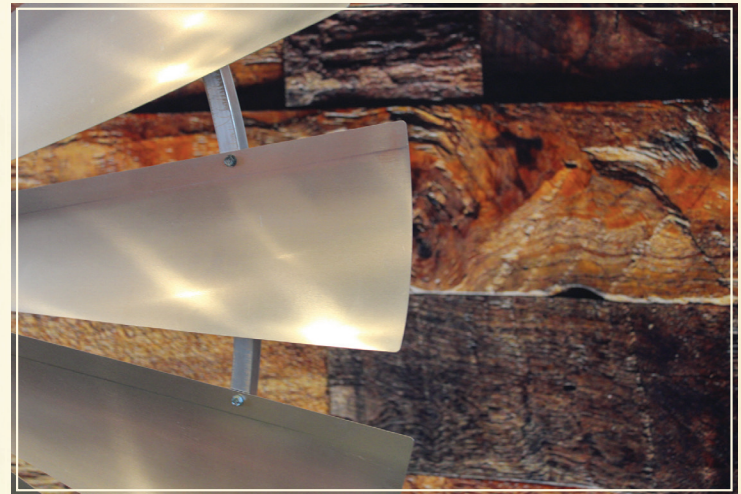
- Tammie H.

## Metal Finishes



"Our ceiling fan is so beautiful! The colors make it a statement piece and it moves air brilliantly! Thank you for your amazing artistry!"

- Mike and Kris J.





# Powder Coated Finishes



## THE GENERAL WEATHER REPORT AND FORCAST

**W**e are approaching the middle of Solar Cycle 25, which is increasing in intensity and already as strong as Solar Cycle 24, which possibly had the lowest solar activity in about 200 years. Such low activity has historically meant cooler average temperatures across Earth, but this connection has become weaker since the last century. We expect a neutral to perhaps weak El Niño later in the year, as well as a warm Atlantic Multidecadal Oscillation (AMO) and cool Pacific Decadal Oscillation (PDO). Also important are the equatorial stratospheric winds involved in the Quasi-Biennial Oscillation, or QBO. Under certain combinations of meteorological conditions, the polar vortex can be displaced from the North Pole, which could open the door for cold blasts to hit southern Canada and the central and eastern United States during this upcoming winter.

**WINTER** will be warmer than normal from New England and the Atlantic Corridor down to Florida, across the Gulf Coast and southern Texas, and in Alaska and near normal or colder elsewhere. Precipitation will be below normal in South Florida, the northern Intermountain and Pacific Northwest regions, and Alaska and near to above normal elsewhere. Snowfall will be above normal across most snow-prone areas, except for being below normal in the Pacific Northwest.

**SPRING** will be cooler than normal in the western Ohio Valley, from the upper Midwest to the northern High Plains, and in Oklahoma and western Hawaii and near normal or warmer elsewhere. Precipitation will be above normal from New England through the Appalachians into Florida, from the Deep South and Texas-Oklahoma across the southern High Plains to the Desert, and across Alaska and near to below normal elsewhere.

**SUMMER** will be hotter than normal from New England through the Atlantic Corridor; in Florida and the Deep South; in the eastern Lower Lakes; from the Upper Midwest to the Heartland; in Texas; across the High Plains, Intermountain region, and Desert Southwest to the Cali-

fornia coast and north to the southern Pacific Northwest; and in Alaska and near normal or cooler elsewhere. Rainfall will be above normal in eastern Virginia and the Carolinas; in the Lower Lakes and western Ohio Valley, much of Texas and Oklahoma, the eastern Upper Midwest, the southern High Plains, and the northern Rockies; from southern Arizona and California up to the Pacific Northwest; and in northern Alaska. It will be near to below normal elsewhere.

Watch for **TROPICAL STORMS** along the Atlantic Corridor in late August, in the Deep South and Texas in mid-July, and in Texas again in late August and mid-September. **HURRICANES** may hit the Southeast and Florida in late August and the Deep South in early July and early September.

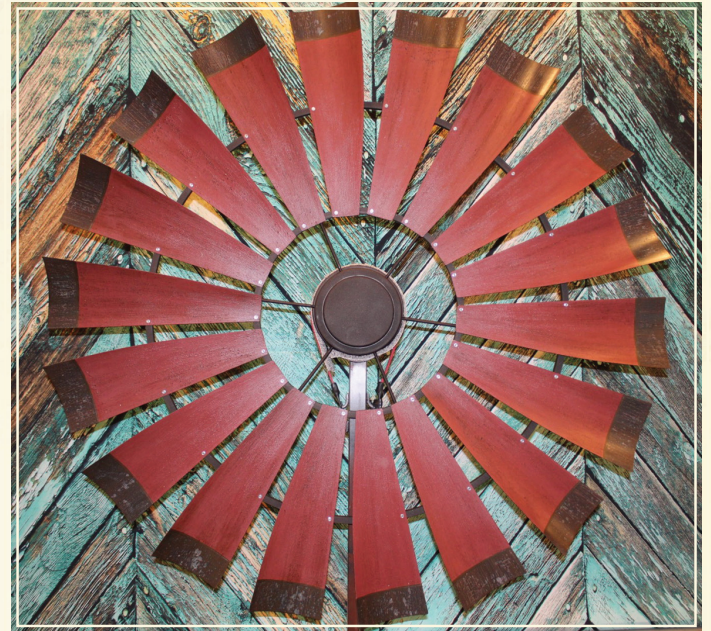
**AUTUMN** will be cooler than normal from the Atlantic Corridor and Appalachians down to Florida and from the Lower Lakes to the Ohio Valley and near normal or warmer elsewhere. Precipitation will be above normal from the Appalachians and Tennessee and Ohio Valleys into the eastern Lower Lakes and in Texas, California, and Alaska and near or below normal elsewhere.

## Weathered Finishes



"Windmill Ceiling Fans hit the nail on the head with this one! Our new ceiling fan is a perfect match to the ceiling and puts an amazing finishing touch on our living room. The customer service was top notch, they talked me through things multiple times before deciding to purchase."

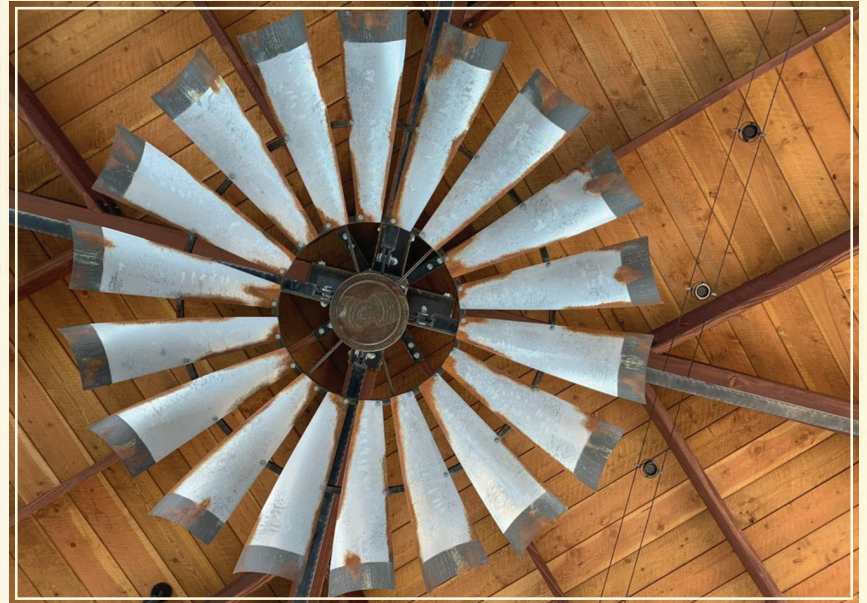
- Amanda P.





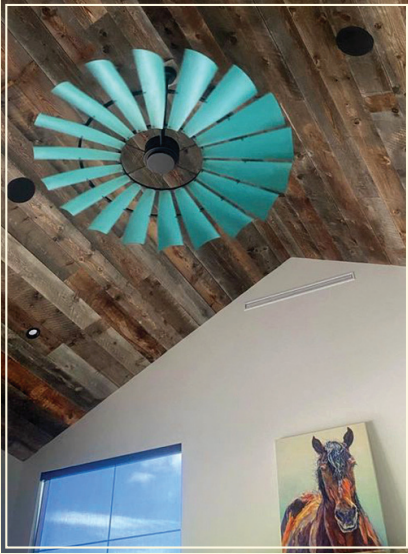
"The quality of workmanship and material cannot be matched. The styles, options and availability of customization makes them the best on the market!"

- John and Sue R.



"I have received my fan and I would like to say it's outstanding. Your service is top notch and I really appreciate being keep informed. Great doing business with you - I will recommend you guys to anyone. Thanks again!"

- Donnie R.

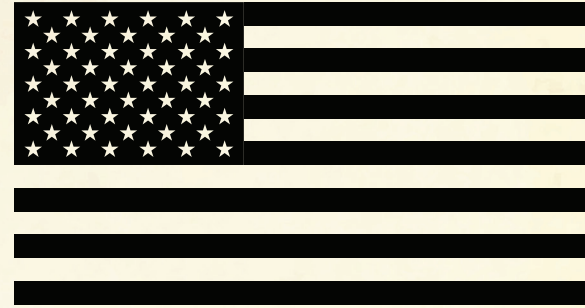


"Ah.....MAZING! This fan is a focal point in our home, a great family business that takes pride in their fans! A HUGE thank you we LOVE it!"

- Amanda P.



## THE STAR-SPANGLED BANNER



Oh, say, can you see  
By the dawn's early light  
What so proudly we hail'd  
At the twilight's last gleaming?

Whose broad stripes and bright stars  
Through the perilous fight  
O'er the ramparts we watch'd  
Were so gallantly streaming?

And the rocket's red glare  
The bombs bursting in air  
Gave proof through the night  
That our flag was still there

O say, does that star-spangled banner yet wave  
O'er the land of the free  
And the home of the brave?

## Leather Options

Leather and cowhide have long been associated with sophistication and a rustic aesthetic. Their use in furniture, accessories, and now ceiling fans adds a touch of warmth and personality to any space. The natural textures of leather and cowhide can beautifully complement various interior styles, from modern farmhouses to western-themed decors. Crafted with meticulous attention to detail, the Train Station finish seamlessly combines steel, iron, copper, nickel, and wood to present a harmonious fusion of materials. This fan isn't just functional; it's a living work of Western art that stands as a testament to your distinctive taste and appreciation for the extraordinary.

The stunning custom brown floral embossed leather motor and longhorn detail adds a touch of bonus flair while keeping things cool and stylish.



# CALENDAR 2024

## JANUARY

MON	TUE	WED	THU	FRI	SAT	SUN
1	2	3	4	5	6	7
8	9	10	11	12	13	14
15	16	17	18	19	20	21
22	23	24	25	26	27	28
29	30	31				

## FEBRUARY

MON	TUE	WED	THU	FRI	SAT	SUN
			1	2	3	4
5	6	7	8	9	10	11
12	13	14	15	16	17	18
19	20	21	22	23	24	25
26	27	28	29			

## MARCH

MON	TUE	WED	THU	FRI	SAT	SUN
				1	2	3
4	5	6	7	8	9	10
11	12	13	14	15	16	17
18	19	20	21	22	23	24
25	26	27	28	29	30	31

## APRIL

MON	TUE	WED	THU	FRI	SAT	SUN
1	2	3	4	5	6	7
8	9	10	11	12	13	14
15	16	17	18	19	20	21
22	23	24	25	26	27	28
29	30					

## MAY

MON	TUE	WED	THU	FRI	SAT	SUN
		1	2	3	4	5
6	7	8	9	10	11	12
13	14	15	16	17	18	19
20	21	22	23	24	25	26
27	28	29	30	31		

## JUNE

MON	TUE	WED	THU	FRI	SAT	SUN
						1
2	3	4	5	6	7	8
9	10	11	12	13	14	15
16	17	18	19	20	21	22
23	24	25	26	27	28	29
30						

## JULY

MON	TUE	WED	THU	FRI	SAT	SUN
1	2	3	4	5	6	7
8	9	10	11	12	13	14
15	16	17	18	19	20	21
22	23	24	25	26	27	28
29	30	31				

## AUGUST

MON	TUE	WED	THU	FRI	SAT	SUN
			1	2	3	4
5	6	7	8	9	10	11
12	13	14	15	16	17	18
19	20	21	22	23	24	25
26	27	28	29	30	31	

## SEPTEMBER

MON	TUE	WED	THU	FRI	SAT	SUN
						1
2	3	4	5	6	7	8
9	10	11	12	13	14	15
16	17	18	19	20	21	22
23	24	25	26	27	28	29
30						

## OCTOBER

MON	TUE	WED	THU	FRI	SAT	SUN
	1	2	3	4	5	6
7	8	9	10	11	12	13
14	15	16	17	18	19	20
21	22	23	24	25	26	27
28	29	30	31			

## NOVEMBER

MON	TUE	WED	THU	FRI	SAT	SUN
				1	2	3
4	5	6	7	8	9	10
11	12	13	14	15	16	17
18	19	20	21	22	23	24
25	26	27	28	29	30	

## DECEMBER

MON	TUE	WED	THU	FRI	SAT	SUN
						1
2	3	4	5	6	7	8
9	10	11	12	13	14	15
16	17	18	19	20	21	22
23	24	25	26	27	28	29
30	31					

## Lighting

We spent a lot of time designing the right lighting kit for our 18-blade Windmill Ceiling Fans. Our clients were the inspiration to create the lighting kit you see below. The lighting kit can be added to any size and any custom finish you choose. (150 Watt)

**Why design THIS lighting kit and not the traditional hanging light?**

1. We did not want to take away from the gorgeous design and look your ceiling would have with lights hanging down
2. Having the lights on the top will give an illumination onto the ceiling creating a unique glow on your ceiling
3. Lighting on the top eliminates the typical strobe effect on your ceiling if the lights were hanging below. Reminder, we have 18-blade Windmill Ceiling Fans



## Tail Vanes

Aluminum Tail Vane | Powdered & Weathered Tail Vane  
Rustic Aluminum Tail Vane 24X12 inches (call for custom sizing)

Truly Unique! This **Tail Vane** is the perfect companion to any of our hand-crafted one-of-a-kind windmill ceiling fans. Derived from our Windmill Ceiling Fan product line, this item works in any Farmhouse or Rustic setting and can be customized to match your fan finish or add your ranch logo or brand. Made from durable aluminum can be added to any of our windmill ceiling fans or used as a wall accent.

Its size and authenticity are sure to draw conversation and admiration and add to the authentic charm of an original vintage find for your home. Made in the USA from quality materials, you will be sure to notice the craftsmanship, these Tail Vanes are so unique, and sure to stand out!

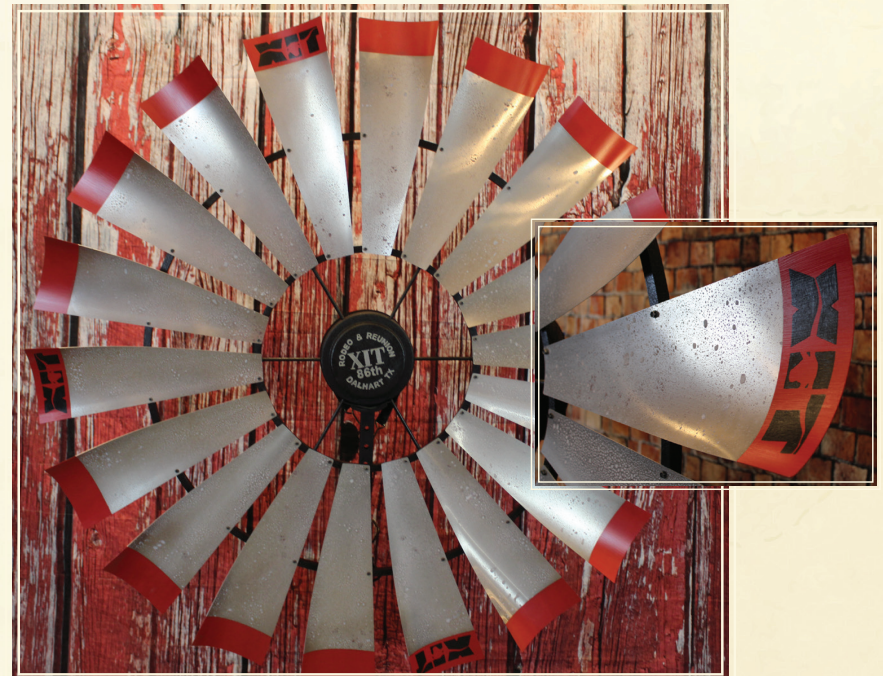
### Product Specifications:

1. Tail 24" Long by 12" High
2. Approximate weight of 5 lbs
3. Match any of our finishes
4. Custom logos available



## Custom Brands

Logo & Ranch Branding: There may be an additional charge for intricate multicolor logo and branding work, available upon request; please inquire about any kind of additional detailing when finalizing your fan order.





## GLOSSARY OF ALMANAC ODDITIES

Many readers have expressed puzzlement over the rather obscure entries that appear on our **Right-Hand Calendar Pages, 121-147**. These “oddities” have long been fixtures in the Almanac, and we are pleased to provide some definitions. Once explained, they may not seem so odd after all!

**EMBER DAYS:** These are the Wednesdays, Fridays, and Saturdays that occur in succession following (1) the First Sunday in Lent; (2) Whitsunday-Pentecost; (3) the Feast of the Holy Cross, September 14; and (4) the Feast of St. Lucia, December 13. The word *ember* is perhaps a corruption of the Latin *quatuor tempora*, “four times.” The four periods are observed by some Christian denominations for prayer, fasting, and the ordination of clergy.

Folklore has it that the weather on each of the 3 days foretells the weather for the next 3 months; that is, in September, the first Ember Day, Wednesday, forecasts the weather for October; Friday predicts November; and Saturday foretells December.

**DISTAFF DAY (JANUARY 7):** This was the day after Epiphany, when women were expected to return to their spinning following the Christmas holiday. A distaff is the staff that women used for holding the flax or wool in spinning. Hence, the term “distaff” refers to women’s work or the maternal side of the family.

**PLOUGH MONDAY (JANUARY):** Traditionally, the first Monday after Epiphany was called Plough Monday because it was the day when men returned to their plough, or daily work, following the Christmas holiday. (Every few years, Plough Monday and Distaff Day fall on the same day.) It was customary at this time for farm laborers to draw a plough through the village, soliciting money for a “plough light,”



which was kept burning in the parish church all year. This traditional verse captures the spirit of it:

*Yule is come and Yule is gone,  
and we have feasted well;  
so Jack must to his flail again  
and Jenny to her wheel.*

**THREE CHILLY SAINTS (MAY):** Mamertus, Pancras, and Gervais were three early Christian saints whose feast days, on May 11, 12, and 13, respectively, are traditionally cold; thus they have come to be known as the Three Chilly Saints. An old French saying translates to “St. Mamertus, St. Pancras, and St. Gervais do not pass without a frost.”

**MIDSUMMER DAY (JUNE 24):** To the farmer, this day is the midpoint of the growing season, halfway between planting and harvest. The Anglican Church considered it a “Quarter Day,” one of the four major divisions of the liturgical year. It also marks the feast day of St. John the Baptist. (Midsummer Eve is an occasion for festivity and celebrates fertility.)

**CORNSCATEOUS AIR (JULY):** First used by early almanac makers, this term signifies warm, damp air. Although it signals ideal climatic conditions for growing corn, warm, damp air poses

a danger to those affected by asthma and other respiratory problems.

**DOG DAYS (JULY 3-AUGUST 11):** These 40 days are traditionally the year’s hottest and unhealthiest. They once coincided with the year’s heliacal (at sunrise) rising of the Dog Star, Sirius. Ancient folks thought that the “combined heat” of Sirius and the Sun caused summer’s swelter.

**LAMMAS DAY (AUGUST 1):** Derived from the Old English *hlaf maesse*, meaning “loaf mass,” Lammas Day marked the beginning of the harvest. Traditionally, loaves of bread were baked from the first-ripened grain and brought to the churches to be consecrated. In Scotland, Lammastide fairs became famous as the time when trial marriages could be made. These marriages could end after a year with no strings attached.

**CAT NIGHTS COMMENCE (AUGUST 17):** This term harks back to the days when people believed in witches. An Irish legend says that a witch could turn into a cat and regain herself eight times, but on the ninth time (August 17), she couldn’t change back and thus began her final life permanently as a cat. Hence the saying “A cat has nine lives.”

**HARVEST HOME (SEPTEMBER):** In Britain and other parts of Europe, this marked the conclusion of the harvest and a period of festivals for feasting and thanksgiving. It was also a time to hold elections, pay workers, and collect rents. These festivals usually took place around the autumnal equinox. Certain groups in the United States, e.g., the Pennsylvania Dutch, have kept the tradition alive.

**ST. LUKE’S LITTLE SUMMER (OCTOBER):** This is a period of warm weather that

occurs on or near St. Luke’s feast day (usually October 18).

**INDIAN SUMMER (NOVEMBER):** A period of warm weather following a cold spell or a hard frost, Indian summer can occur between St. Martin’s Day (November 11) and November 20. Although there are differing dates for its occurrence, for more than 230 years the Almanac has adhered to the saying “If All Saints’ [November 1] brings out winter, St. Martin’s brings out Indian summer.” The term may have come from early North American indigenous peoples, some of whom believed that the condition was caused by a warm wind sent from the court of their southwestern god, Cautantowwit.

**HALCYON DAYS (DECEMBER):** This period of about 2 weeks of calm weather often follows the blustery winds at autumn’s end. Ancient Greeks and Romans experienced this weather at about the time of the winter solstice (around December 21), when the halcyon, or kingfisher—having charmed the wind and waves so that waters were especially calm at this time—was thought to brood in a nest floating on the sea.

**BEWARE THE POGONIP (DECEMBER):** The word *pogonip* refers to frozen fog and was coined by North American indigenous peoples to describe the frozen fogs of fine ice needles that occur in the mountain valleys of the western United States and Canada. According to tradition, breathing the fog is injurious to the lungs. ■



## Western Cowhide Frameworks

We're excited to introduce our exclusive custom gallery Western Cowhide Frameworks! We value our customers' feedback and we listened to you! You wanted unique, one of a kind, rustic artwork that would compliment any room and your custom Windmill Ceiling Fan! Custom, Custom, Custom – custom prints, custom frames and cowhides!

This Gallery Collection is like no other. Farm and custom portraits with one of a kind cowhide accents and aluminum frames with custom finishes. Design a frame that matches or compliments your hand crafted windmill ceiling fan. Each piece is created in Texas with quality American materials just like our Windmill Ceiling Fans.

We are introducing four custom pieces – The Casey, The Classic, The Aeromotor and Old Blue! Like our windmill ceiling fans these pieces are totally customizable and quality made!! We start with our



own beautiful farm photos and print them on durable aluminum for a clarity and shine like no other just like our windmill blades.

You can even send in photos for your own custom print of your farm, ranch or livestock! Our frames are constructed from the same aluminum our windmill frames are made from. The kicker is that we can custom create any finish on our frames and even match or compliment the finish on your Windmill Ceiling Fan!!! Then we had the beautiful and one of a kind cowhides and the sky is the limit!! We finish each piece with our own WCF brand and our exclusive signature for you to enjoy.



## Easy Installation - Patriot Motor

### Tools Needed for Assembly (Not Included)

- One Philips head screwdriver
- One wire stripper
- One 5/16" bit
- One adjustable wrench



SCAN ME

### Instructions

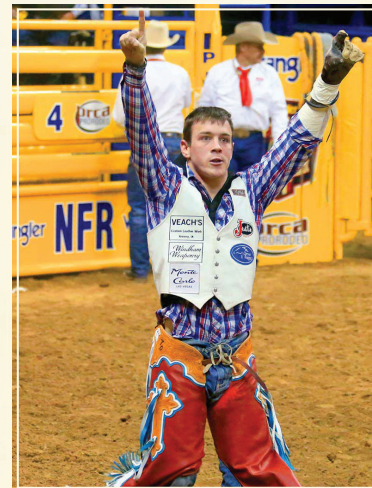
1. Install the ball mount bracket to the ceiling with the two set screws provided.
2. Attach the down rod to the motor, aligning the clevis pin holes in the down rod with the clevis pin holes on the down rod coupling that is attached to the motor. Install the clevis pin and secure it with the hairpin clip. Finally, assemble the coupling cover, canopy screw cover, and ceiling canopy through the down rod. Once they're placed on the down rod, they then may rest on top of the motor until further instruction.
3. Lift the fan and place the ball mount into the ball mount bracket, confirming the ball mount is lined up with the groove on the ball mount bracket.
4. Secure the safety cable. **The steel cable must be fixed onto a secure frame or building structure or wrapped around the mounting bracket and be securely clamped in such a manner as to support the weight of the fan.**
5. Make sure to set a frequency on the receiver and to match it with your wall control or wireless remote. Individually connect the electrical motor wires to the receiver. Then, connect the household supply wires (120 Volt AC, 60 Hz, 15 amp circuit) to the receiver. Thread the receiver through the ball mount bracket. Then, wrap the wire along the ball mount bracket to prepare to install the ceiling canopy.
6. Attach the ceiling canopy with the two small screws provided. Next, place the canopy screw cover over the screws.
7. Attach the blades to the ring set using the self-tapping screws provided. The blades are to be attached by matching the numbers labeled on the back of the blades to the numbers labeled on the ring set.
8. Install Wall Control making sure frequency matches with receiver.
9. Complete the Learn Process, thus allowing the motor to learn the blade system weight.

**Congratulations, you have successfully installed your brand new Custom Original Windmill Ceiling Fan.**

## American History National Finals Rodeo Fun Facts

Here are a few NFR and Cowboy Christmas fun facts to leave you with:

1. The Women's Professional Rodeo Association (WPRA) is the US's **OLDEST** women's sports association in the USA. They were founded in 1948 by a group of Texas ranch women who wanted to add a little diversity to rodeo sport.
2. More than **4,700 Cowboys** began this year competing in pursuit of the Gold Buckle. To even get to Las Vegas for the opportunity to compete for the Buckle, they'll need to compete in 80-100 rodeos, paying their own expenses and entry fees.
3. The National Rodeo Finals® has been **sold out** the last 33 years in a row.



**Tim O'Connell**

3 Time World Champion and  
Co-owner of Ranch & Co. Interiors  
[www.ranchandcointeriors.com](http://www.ranchandcointeriors.com)







THE ORIGINAL  
**WINDMILL**  
CEILING FANS

THE OLD WEST  
MEETS *Creativity*



**OWNER/OPERATOR**  
Kelly Eggers

## Created ONE at a TIME

- \* American Made
- \* Quality Lightweight Aluminum & Steel Components
- \* Easy Installation
- \* Available in 46", 52", 60", 66", 72", 84", 96"
- \* Custom Finishes
- \* Family Owned & Operated

**Let's Build Your Custom  
Windmill Ceiling Fan  
TODAY**

**972.834.5555**

[WindmillCeilingFans.com](http://WindmillCeilingFans.com)

